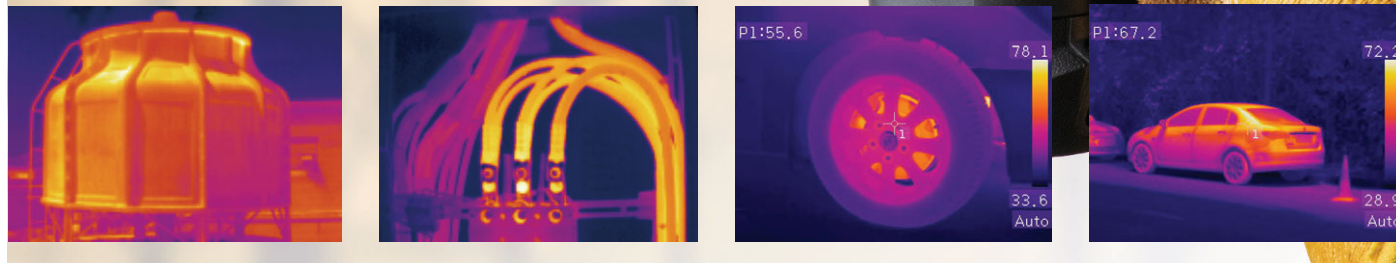


High Performance Thermal Imagers



EMC
EN: 61326-1
EN: 61010-1



Key features

- Smart design with big screen occupation ratio
- Capture additional measurements fastly and conveniently with wireless modules
- Find problems faster and easier and accurately identify potential issues by combining digital and IR images
- Image fusion function displays thermal image super-imposed over a digital image and easy-to-access thumbnail image gallery helps you to quickly review and find your thermal images.
- Powerful Auto Fusion mode(AUF)
- Equipped with standard video, USB outputs as well as a removable SD card.
- Realtime analyse and picture analyse function



Model: 986

Specifications		983	984	986H	986
Imaging and optical data					
IR resolution	Focal plane array (FPA), uncooled microbolometer	120x120	120x90	256x192	160x120
Field of View (FOV)		15.6°x15.6°	50°x38°	40.4°x30.3°	42°x32°
Spatial resolution	(IFOV)	2.26mrad	7.3mrad	5.48mrad	2.6mrad
Thermal sensitivity/NETD	< 0.05°C @ +30°C/(+86°F), < 0.1°C/100mK	*	*	*	*
Image frequency		50Hz	50Hz	25Hz	25Hz
Focus	Focus free	*	*	*	*
Image presentation					
Display	3.5" 640x480 touch screen	*	*	*	*
Image modes	IR image, visual image, picture in picture, AUF	*	*	*	*
Color palettes	IRON, Rainbow, Grey, Grey Inverted, Brown, Blue-red, hot-cold, Feather	*	*	*	*
Measurement					
Object temperature range		-20 to 650°C	-20 to 550°C	-20 to 550°C	-20 to 550°C
Accuracy		±2°C or 2%	±2°C or 2%	±2°C or 2%	±2°C or 2%
Measurement analysis					
Emissivity adjustable	0.01~1.0 Adjustable	*	*	*	*
Automatic hot /cold detection	Auto hot or cold spotmeter marks	*	*	*	*
Set-up					
Laser / floodlight	< class2 / white LED floodlight	*	*	*	*
Language selection	English, Chinese, French, German, Spanish, Japanese, Korean, Portuguese, Italian	*	*	*	*
Storage of videos/images					
Storage media	4Gbytes eMMC or 8GB SD card	*	*	*	*
Video storage format	Standard MPEG-4, 640x480@30fps, on memory card > 60 minutes	*	*	*	*
Image storage format	Standard JPEG, including measurement data, on memory card > 1000 pictures	*	*	*	*
Storage mode	IR/visual images; simultaneous storage of IR and visual images	*	*	*	*
Digital camera					
Built-in visible light digital camera	2M Pixels	*	*	*	*
Data communication interfaces					
USB interfaces	USB-micro, data transform between camera and PC Remote control, live video	*	*	*	*
Wi-Fi connectivity	Wi-Fi connectivity allows to send images and data to mobile devices remote control, live video	*	*	*	*
Power system					
Battery	Lithium polymer battery, 4 hours operating time	*	*	*	*
Input voltage	DC 5V	*	*	*	*
Charging system	In camera (AC adapter)	*	*	*	*
Power management	Automatic shutdown and sleep mode (user selectable)	*	*	*	*

Size(HxWxD): 228mm x 100mm x 90mm

Weight: 520g

Accessories: Hard transport case, 7.5mm lens, Tripod base, AC charger/Power supply, Battery, software CD-ROM, Handstrap, micro SD card, USB cable, Gift box.